

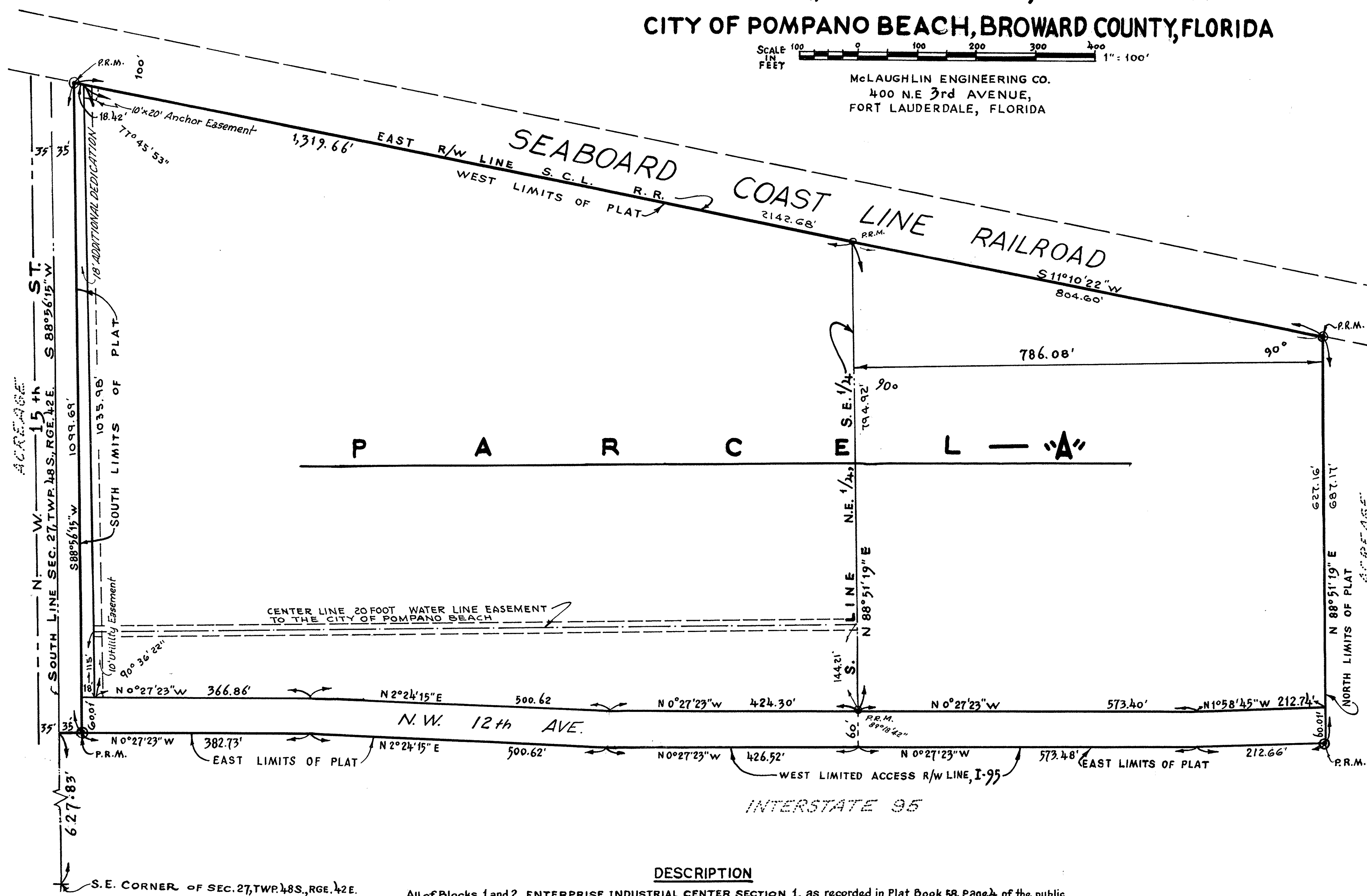
**DRC**PZ22-12000023  
03/01/2023

# FLO. EAST CO. PLAT

## SECTION 27, TWP. 48 SOUTH, RGE. 42 EAST

### CITY OF POMPANO BEACH, BROWARD COUNTY, FLORIDA

SCALE 1" = 100'

McLAUGHLIN ENGINEERING CO.  
400 N.E. 3rd AVENUE,  
FORT LAUDERDALE, FLORIDA

#### DESCRIPTION

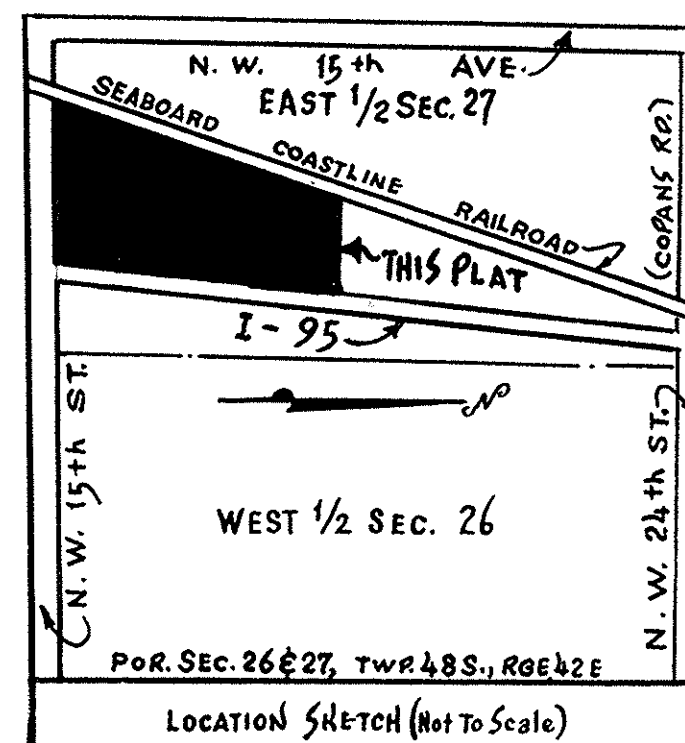
All of Blocks 1 and 2, ENTERPRISE INDUSTRIAL CENTER SECTION 1, as recorded in Plat Book 58, Page 24, of the public records of Broward County, Florida, and all that portion of Block 3 of said ENTERPRISE INDUSTRIAL CENTER SECTION 1, lying West of the West limited Access line of State Road No. 9; TOGETHER WITH ALL of NORTH WEST 12th Avenue, lying between said Blocks 1, 2 and 3, as shown on the said Plat of ENTERPRISE INDUSTRIAL CENTER SECTION 1, and also TOGETHER WITH: Portions of Section 27, Township 48 South, Range 42 East, Broward County, Florida, described as follows:

All that part of the South 786.08 feet (as measured at right angle) of the NE 1/4 of the SE 1/4 lying West of the West limited Access Right-of-Way line of said State Road No. 9, and East of the East Right-of-Way line of the Seaboard Coastline Railroad and all that part of the SE 1/4 of the NW 1/4 of the SE 1/4, lying East of the East Right-of-Way line of the Seaboard Coastline Railroad and all that part of the East 1/2 of the SW 1/4 of the SE 1/4, lying East of the East Right-of-Way line of the Seaboard Coastline Railroad, less the South 35 feet thereof, and the West 1/2 of the SW 1/4 of the SE 1/4 of the SE 1/4, less the South 35 feet thereof, and all that part of the West 1/2 of the SE 1/4 of the SE 1/4 of the SE 1/4, lying West of the West limited Access Right-of-Way line of State Road No. 9, less the South 35 feet thereof.

PR.M. NOTES  
Indicates Permanent Reference Monument.  
Bearings refer to an assumed Meridian.

#### CITY AND COUNTY ENGINEER'S SIGNATURES

This Plat approved and accepted for Record.

Richard C. Mills  
RICHARD C. MILLS, CITY ENGINEERJohn M. Gerren, Jr.  
JOHN M. GERREN, JR., P.E., REG. NO. 6895  
COUNTY ENGINEER, STATE OF FLORIDA

#### DEDICATION

STATE OF FLORIDA } SS KNOW ALL MEN BY THESE PRESENTS:  
COUNTY OF ST. JOHNS } That FLORIDA EAST COAST RAILWAY COMPANY, a Florida Corporation, owner of the lands described and shown as included in this Plat, has caused said lands to be subdivided and platted as hereon shown; said Plat to be known as, FLO. EAST CO. PLAT. The Thoroughfares are hereby dedicated to the perpetual use of the public, in fee simple. The utility and anchor easements are dedicated to the public for purposes as indicated.

IN WITNESS WHEREOF: FLORIDA EAST COAST RAILWAY COMPANY, has caused this Dedication to be signed in its name by its President and Secretary, this 28th day of October, 1971, in the City of St. Augustine, County of St. Johns, State of Florida.

FLORIDA EAST COAST RAILWAY COMPANY  
Witness: J. L. Williams, President  
Witness: J. T. Rice, Secretary

#### ACKNOWLEDGEMENT

STATE OF FLORIDA } SS I HEREBY CERTIFY: That on this day personally appeared before me, an officer duly authorized by law, to administer oaths and take acknowledgements, W. L. THORNTON and J. T. RICE, President and Secretary, respectively, of FLORIDA EAST COAST RAILWAY COMPANY, and they acknowledged before me, that they executed the foregoing Dedication, as such officers of said Corporation.

WITNESS: My hand and official Seal in the City of St. Augustine, County of St. Johns, State of Florida, this 28th day of October, 1971.  
My Commission Expires: 3/1/77

#### CITY COMMISSION

THIS IS TO CERTIFY: That this Plat has been approved and accepted for Record, by the City of Pompano Beach, Florida, and passed by Ordinance No. 12-15, this 21st day of December, 1971.

#### CITY PLANNING BOARD

THIS IS TO CERTIFY: That the Planning Board of Pompano Beach, Florida, has approved and accepted this Plat by Resolution, this 16th day of November, 1971.

#### BROWARD COUNTY AREA PLANNING BOARD

THIS IS TO CERTIFY: That the Broward County Area Planning Board approved this Plat with regard to dedication of Rights-of-Way for Traffic Ways by Resolution, duly adopted this 26th day of April, 1972.

#### CIRCUIT COURT CLERK'S CERTIFICATE

STATE OF FLORIDA } SS I, HEREBY CERTIFY: That this COUNTY OF BROWARD } Plat of FLO. EAST CO. PLAT, complies with the provisions of an "Act to regulate the making and filing for Record of Maps and Plats in the State of Florida," approved by the Governor, June 27th 1971. This Plat accepted for Record by the Board of County Commissioners of Broward County, Florida, this 28th day of December, 1971.

JACK WHEELER, Circuit Court Clerk  
This Plat filed for Record, this 25th day of August, 1972, and recorded in BOOK 77 of Plats, at Page 5, "Record Verified".  
JACK WHEELER, Circuit Court Clerk

#### SURVEYOR'S CERTIFICATE

STATE OF FLORIDA } SS WE, HEREBY CERTIFY: That this Plat of COUNTY OF BROWARD } FLO. EAST CO. PLAT, is a correct representation of a Survey made by us, and that Permanent Reference Monuments (P.R.M.'s), have been set as indicated. Fort Lauderdale, Florida, this 3rd day of November, 1971.

**DRC**PZ22-12000023  
12/07/2022